



India Meteorological Department
(Ministry of Earth Sciences)

NATIONAL BULLETIN NO. 3 (BOB/01/2024)

TIME OF ISSUE: 1400 HOURS IST DATED: 24.05.2024
FROM: INDIA METEOROLOGICAL DEPARTMENT (FAX NO. 24643965/24699216/24623220)

TO: CONTROL ROOM, NDM, MINISTRY OF HOME AFFAIRS (FAX.NO. 23093750)
CONTROL ROOM NDMA (FAX.NO. 26701729)
CABINET SECRETARIAT (FAX.NO.23012284, 23018638)
PS TO HON'BLE MINISTER FOR S & T AND EARTH SCIENCES (FAX NO.23316745)
SECRETARY, MOES (FAX NO. 24629777)
H.Q. (INTEGRATED DEFENCE STAFF AND CDS) (FAX NO. 23005137/23005147)
DIRECTOR GENERAL, DOORDARSHAN (23385843)
DIRECTOR GENERAL, AIR (23421105, 23421219)
PIB MOES (FAX NO. 23389042)
UNI (FAX NO. 23355841)
D.G. NATIONAL DISASTER RESPONSE FORCE (NDRF) (FAX NO. 26105912, 2436 3260)
DIRECTOR, PUNCTUALITY, INDIAN RAILWAYS (FAX NO. 23388503)
CHIEF SECRETARY, ANDAMAN & NICOBAR ISLANDS (FAX NO. 03192- 232656)
CHIEF SECRETARY, GOVT. WEST BENGAL (FAX NO. 033-22144328)
CHIEF SECRETARY, GOVT. OF ODISHA (FAX NO. 0674 -2536660)
CHIEF SECRETARY, GOVT. OF ANDHRA PRADESH (FAX NO. 0863-2441029, 08645-246600)
CHIEF SECRETARY, GOVT. OF TAMIL NADU (FAX NO. 044-25672304)
CHIEF SECRETARY, GOVT. OF PUDUCHERRY (FAX NO. 0413-2337575, 2334145)

Sub: Depression over Eastcentral Bay of Bengal (Pre-Cyclone Watch for West Bengal Coast)

The Depression over central Bay of Bengal moved north-northeastwards with a speed of 16 kmph during past 06 hours and lay centered at 1130 hrs IST of today, the 24th May, 2024 over Eastcentral Bay of Bengal near latitude 15.8°N and longitude 88.9°E, about 700 km south-southwest of Khepupara (Bangladesh), about 660 km south-southeast of Sagar Islands (West Bengal) and 710 km south of Canning (West Bengal).

It is very likely to continue to move north-northeastwards and intensify into a **Cyclonic Storm** over eastcentral Bay of Bengal by 25th May morning. Subsequently, it would move nearly northwards, intensify into a **Severe Cyclonic Storm** by 25th night. Continuing to move nearly northwards, it is very likely to **cross Bangladesh and adjoining West Bengal coasts between Sagar Island and Khepupara around 26th May midnight as a Severe Cyclonic Storm.**

Forecast track and intensity are given in the following table:

Date/Time (IST)	Position (Lat. °N/ long. °E)	Maximum sustained surface wind speed (Kmph)	Category of cyclonic disturbance
24.05.24/1130	15.8/88.9	40-50 gusting to 60	Depression
24.05.24/2330	16.6/89.2	50-60 gusting 70	Deep Depression
25.05.24/1130	17.6/89.5	60-70 gusting to 80	Cyclonic Storm
25.05.24/2330	18.7/89.7	80-90 gusting to 100	Cyclonic Storm
26.05.24/1130	20.1/89.6	100-110 gusting to 120	Severe Cyclonic Storm
26.05.24/2330	21.5/89.5	110-120 gusting to 135	Severe Cyclonic Storm
27.05.24/1130	22.7/89.6	70-80 gusting to 90	Cyclonic Storm
27.05.24/2330	23.8/90.0	50-60 gusting 70	Deep Depression
28.05.24/1130	24.9/90.4	35-45 gusting to 55	Depression

Warnings (Graphics Attached):

Heavy Rainfall Warning:

- (a) Light to moderate rainfall at most places with heavy to very heavy rainfall at isolated places is likely over coastal districts of West Bengal on 26th & 27th and isolated heavy rainfall over North Coastal Odisha on 25th & 26th May and isolated extremely heavy rainfall likely over coastal districts of West Bengal on 26th May. Light to moderate rainfall at most places with heavy to very heavy rainfall at isolated places over eastern districts of Sub-Himalayan West Bengal on 27th and 28th May.
- (b) Light to moderate rainfall at most places with heavy to very heavy rainfall at isolated places is likely over Mizoram, Tripura and South Manipur on 26th and over Assam & Meghalaya, Arunachal Pradesh, Nagaland, Mizoram, Manipur & Tripura on 27th & 28th May.
Isolated extremely heavy rainfall is likely over Assam & Meghalaya on 27th & 28th May, Arunachal Pradesh on 28th May and Mizoram & Tripura on 27th May.
- (c) Light to moderate rainfall at most places with heavy to very heavy rainfall at isolated places are likely over Andaman Islands on 24th May and heavy rainfall at isolated places over north Andaman Islands on 25th May.

Wind Warning:

- ❖ Squally wind speed reaching 40-50 kmph gusting to 60 kmph is likely to prevail over central and adjoining South Bay of Bengal on 24th May. It would become 50-60 kmph gusting to 70 kmph over central Bay of Bengal on 24th May evening.
- ❖ It would extend to adjoining areas of North Bay of Bengal with gale wind speed reaching 60-70 kmph gusting to 80 kmph from 25th May morning. It would further increase becoming 100-110 kmph gusting to 120 kmph over North Bay of Bengal from morning and 110-120 kmph gusting to 135 kmph from evening of 26th May. Gale wind speed reaching 70-80 kmph gusting to 90 kmph is likely over adjoining central Bay of Bengal from 26th morning for subsequent 24 hours.
- ❖ Squally wind speed reaching 40-50 kmph gusting to 60 kmph is likely along & off Bangladesh, West Bengal and adjoining North Odisha coasts from 25th May evening. It is likely to increase becoming gale wind speed reaching 60-70 kmph gusting to 80 kmph from morning of 26th May and 100-120 kmph gusting to 135 kmph along & off Bangladesh and adjoining West Bengal coasts from evening of 26th evening for subsequent 12 hours.
- ❖ Squally wind speed reaching 40-50 kmph gusting to 60 kmph is likely over Andaman Islands and North Andaman Sea on 24th May.
- ❖ Squally wind speed reaching 50-60 kmph gusting to 70 kmph is likely over Mizoram and Tripura and 40-50 kmph gusting to 60 kmph is likely over South Assam and Meghalaya on 27th May.

Storm surge:

Storm surge of about 1.0 meter above astronomical tide likely to inundate low lying areas of coastal West Bengal and 1.0-1.5 m over Bangladesh at the time of landfall.

Sea condition:

- ❖ Rough to very rough sea condition is likely over central and adjoining south Bay of Bengal on 24th May. It would become high over central Bay of Bengal on 25th May & 26th May and High to Very High over North Bay of Bengal from 25th evening till 27th May morning.
- ❖ Rough to very rough sea condition is likely along & off Bangladesh, West Bengal and adjoining North Odisha coasts from 25th May evening and high to very high along &

off Bangladesh and West Bengal coasts from 26th morning onwards till 27th May morning.

- ❖ Rough to very rough sea condition is likely over Andaman Islands and North Andaman Sea on 24th May.

Damage Expected over South & North 24 Parganas districts of west Bengal:

- Major damage to thatched houses/ huts. Possibilities of damage to vulnerable structure.
- Unattached metal sheets may fly.
- Breaking of tree branches, uprooting of trees. Major damage to banana and papaya trees. Dead limbs may blow off from trees.
- Damage to power and communication lines due to breaking of branches and uprooting of trees.
- Damage to Kutcha and minor damage to Pucca roads due to heavy rain.
- Damage to paddy crops, horticultural crops and orchards.
- Inundation of low lying areas and localized flooding
- Occasional reduction in visibility due to heavy rainfall.
- Disruption of traffic due to water logging and squally winds

Action Suggested for North & South 24 Parganas districts of West Bengal:

- Total suspension of fishing operations.
- Surface transport and shipping operations need to be regulated
- Onshore & Offshore operation need to be regulated as per guidelines
- Coastal hutment dwellers to be in safer places.
- People in affected areas to remain indoors.
- Avoid going to areas that face the water logging problems often.
- Avoid staying in vulnerable structure.

Fishermen Warning (graphics attached):

Fishermen are advised not to venture into south Bay of Bengal and Andaman Sea till 24th May, central Bay of Bengal till 26th May and North Bay of Bengal from 25th May till 27th May. Fishermen out at sea are advised to return to the coast.

The system is under continuous surveillance and the next message will be issued at 2030 hours IST of today, the 24th May, 2024.

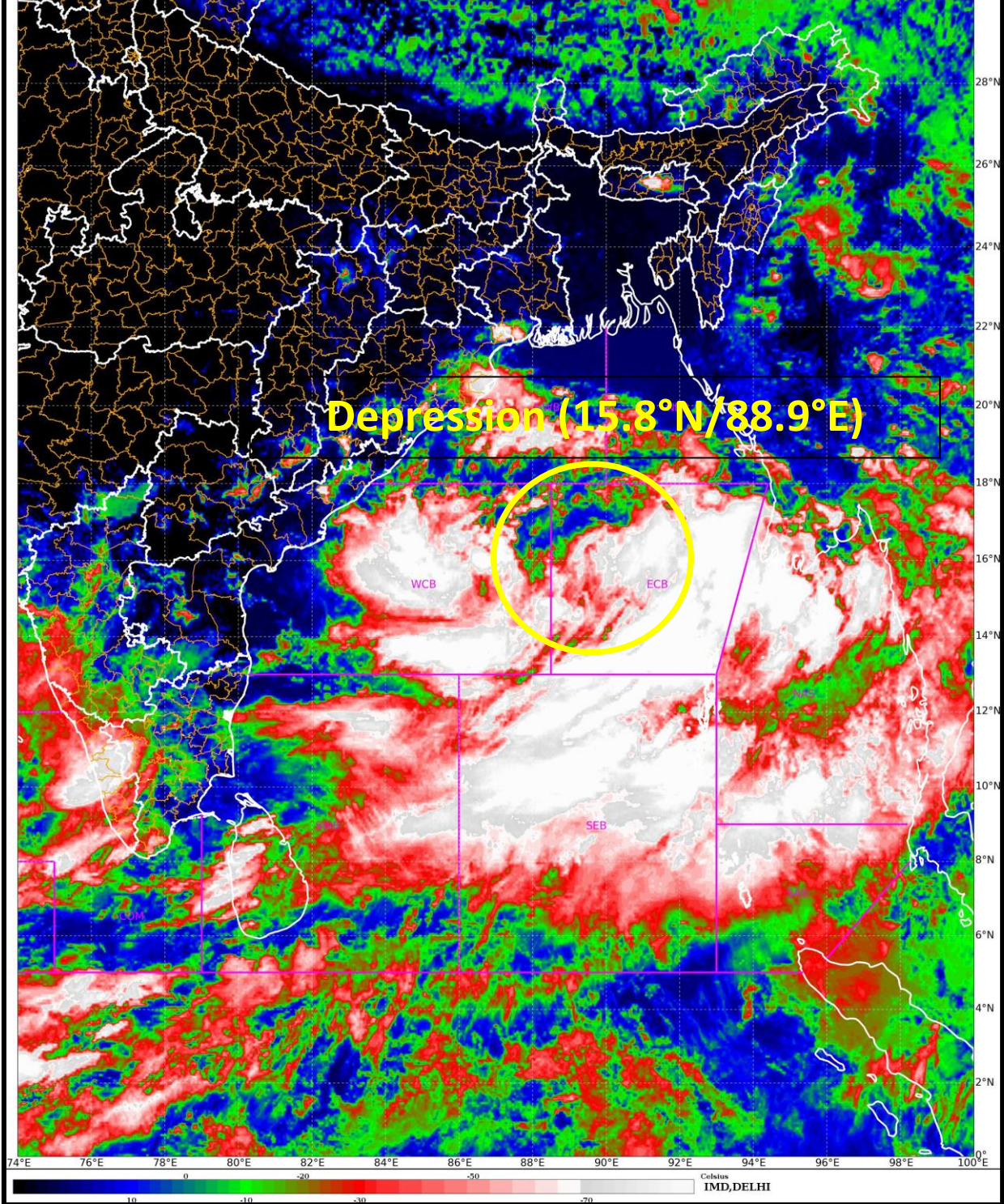
(Krishna Mishra)

Scientist C, Cyclone Warning Division, New Delhi

Copy to: ACWC Kolkata/ ACWC Chennai/ CWC Bhubaneswar/CWC Visakhapatnam/MO Port Blair

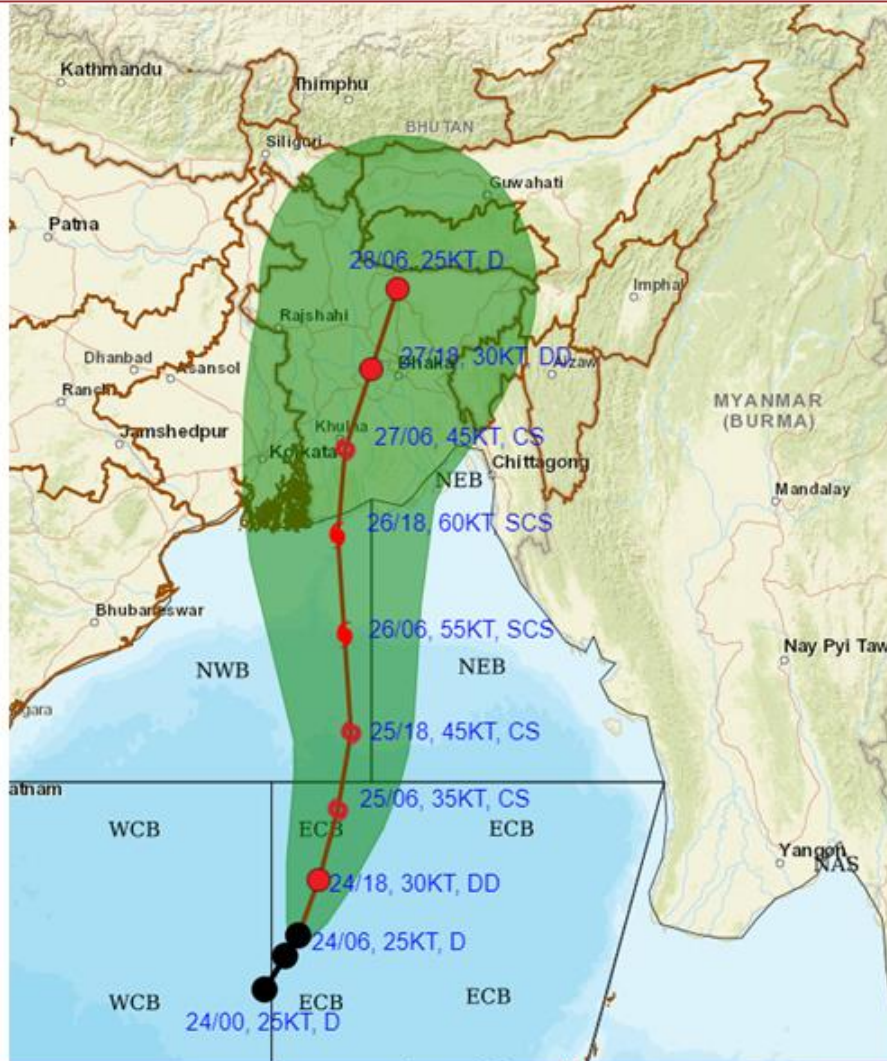
SAT : INSAT-3D IMG
IMG_TIR1_TEMP 10.8 um
LIC Mercator

24-05-2024/(0700 to 0726) GMT
24-05-2024/(1230 to 1256) IST





FORECAST TRACK ALONGWITH CONE OF UNCERTAINTY IN ASSOCIATION WITH DEPRESSION OVER CENTRAL BAY OF BENGAL BASED ON 0600 UTC (1130 IST) OF 24TH MAY 2024.



DATE/TIME IN UTC
IST=UTC + 0530

L: LOW PRESSURE AREA

WML: WELL MARKED LOW PRESSURE AREA

D: DEPRESSION (17-27 KT)

DD: DEEP DEPRESSION (28-33 KT)

CS: CYCLONIC STORM (34-47 KT)

SCS: SEVERE CYCLONIC STORM (48-63KT)

VSCS: VERY SEVERE CYCLONIC STORM (64-89 KT)

ESCS: EXTREMELY SEVERE CYCLONIC STORM (90-119 KT)

SuCS: SUPER CYCLONIC STORM (\geq 120 KT)

● LESS THAN 34 KT

○ 34-47 KT

○ \geq 48 KT

— OBSERVED TRACK

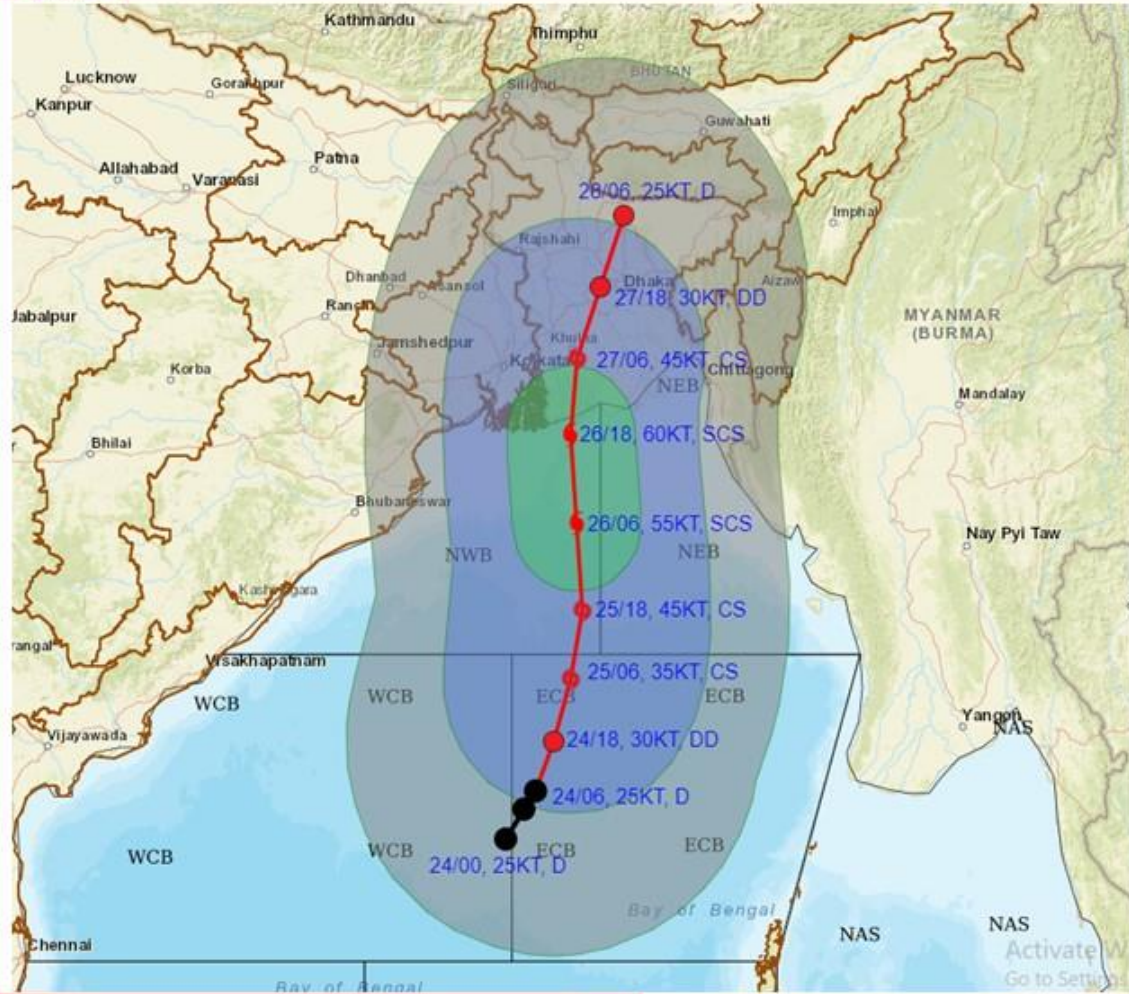
— FORECAST TRACK

▲ CONE OF UNCERTAINTY

Forecast	DISTANCE (KM) AND DIRECTION FROM STATIONS		
Date and Time (UTC)	Canning	Khepupara	Sagar Island
24.05.24/0600	710, S	700, SSW	660, S
25.05.24/0600	520, S	490, S	470, SSE
26.05.24/0600	250, SSE	210, SSW	230, SE
27.05.24/0600	110, ENE	110, NW	200, NE
28.05.24/0600	350, NNE	330, N	430, NNE



FORECAST TRACK ALONGWITH QUADRANT WIND DISTRIBUTION IN ASSOCIATION WITH DEPRESSION OVER CENTRAL BAY OF BENGAL BASED ON 0600 UTC (1130 IST) OF 24TH MAY 2024.



DATE/TIME IN UTC
IST=UTC + 0530

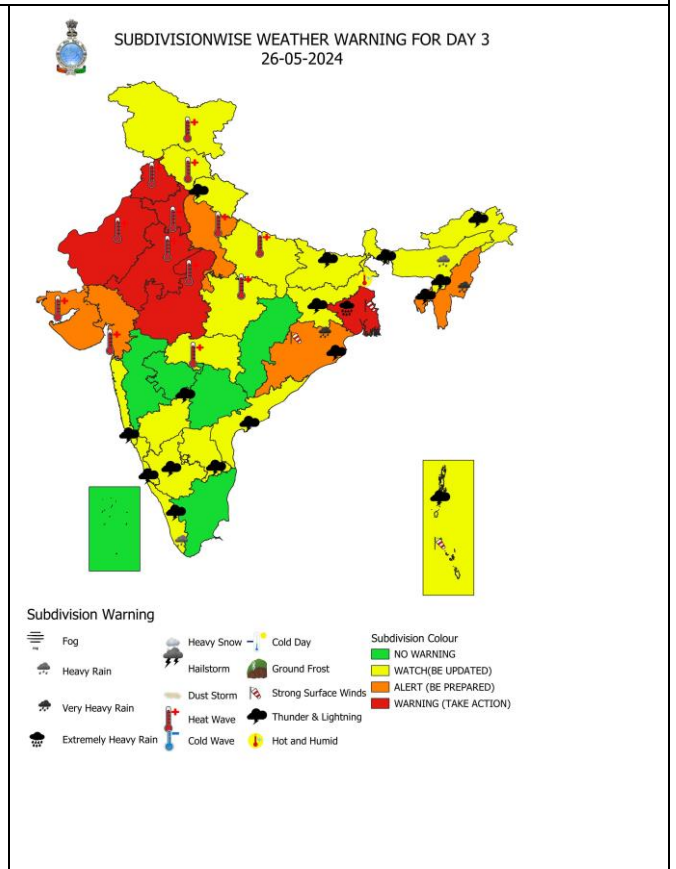
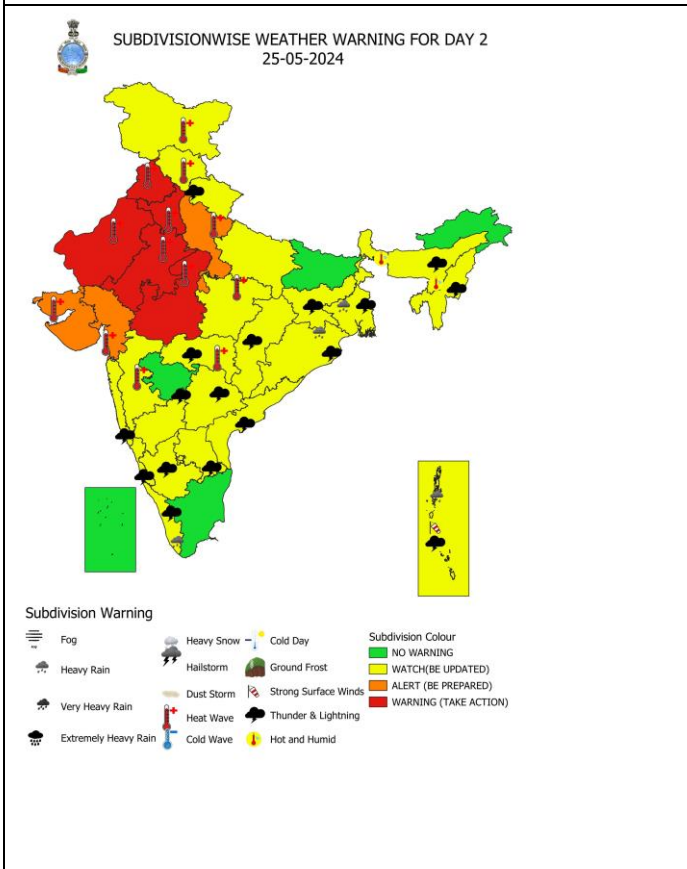
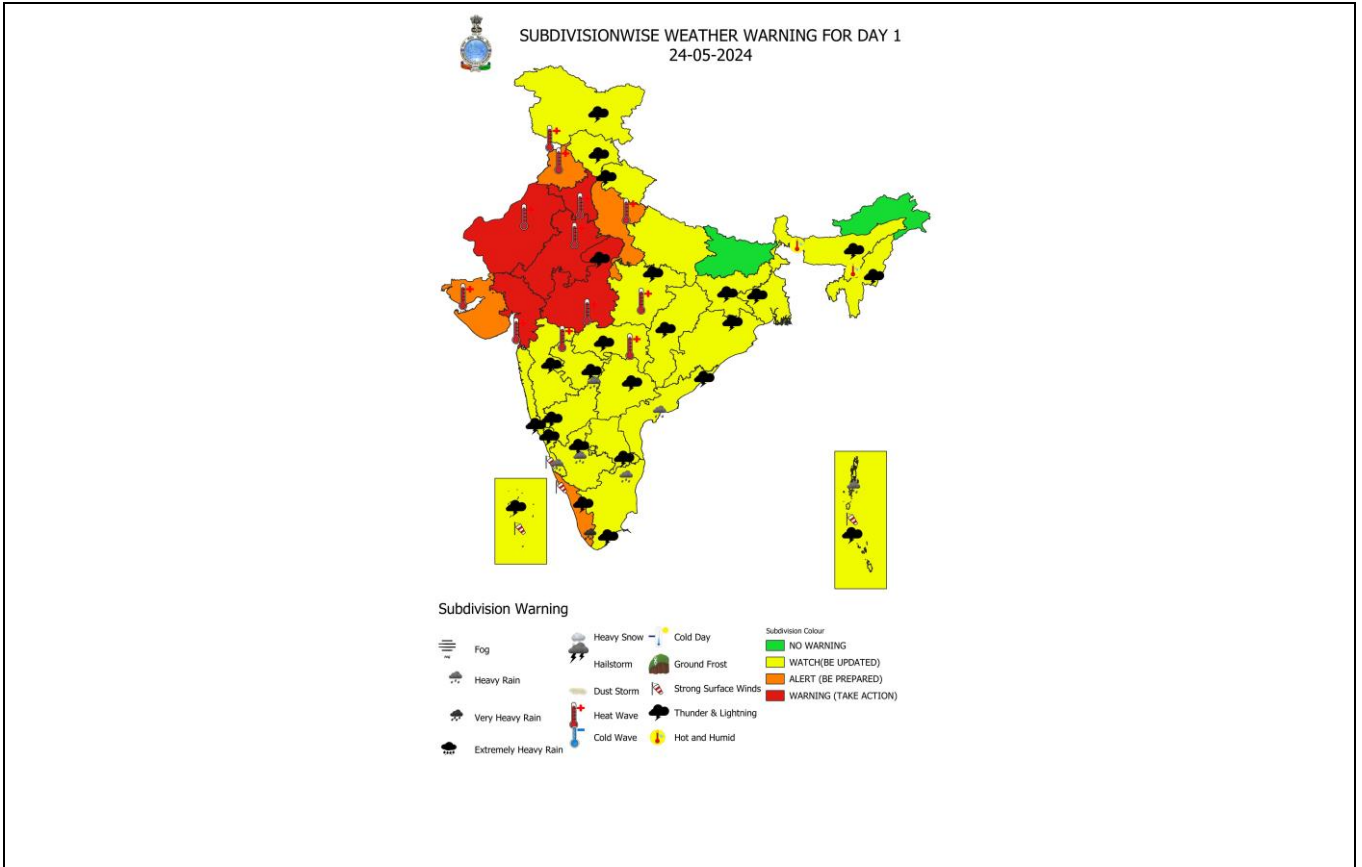
L: LOW PRESSURE AREA
WML: WELL MARKED LOW PRESSURE AREA
D: DEPRESSION (17-27 KT)
DD: DEEP DEPRESSION (28-33 KT)
CS: CYCLONIC STORM (34-47 KT)
SCS: SEVERE CYCLONIC STORM (48-63KT)
VSCS: VERY SEVERE CYCLONIC STORM (64-89 KT)
ESCS: EXTREMELY SEVERE CYCLONIC STORM (90-119 KT)
SuCS: SUPER CYCLONIC STORM (≥ 120 KT)

- LESS THAN 34 KT
- 34-47 KT
- ≥ 48 KT
- OBSERVED TRACK
- FORECAST TRACK
- CONE OF UNCERTAINTY
- AREA OF MAXIMUM SUSTAINED WIND SPEED:
 - 28-33 KT (52-61 KMPH)
 - 34-49 KT (62-91 KMPH)
 - 50-63 KT (92-117 KMPH)
 - ≥ 64 KT (≥118 KMPH)

IMPACT OVER THE SEA

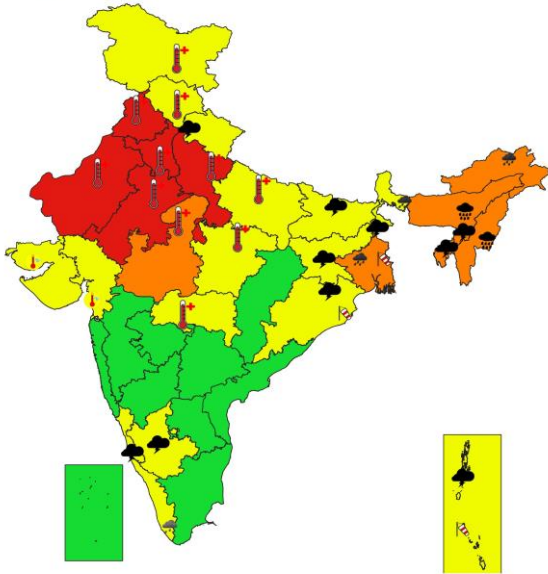
MSW (knot/kmph)	Impact	Action
28-33 (52-61)	Very rough seas	Total suspension of fishing operations
34-49 (62-91)	High to very high seas	Total suspension of fishing operations
50-63 (92-117)	Very high seas	Total suspension of fishing operations
≥ 64 (≥118)	Phenomenal	Total suspension of fishing operations

Heavy Rainfall Warning Graphics





SUBDIVISIONWISE WEATHER WARNING FOR DAY 4
27-05-2024

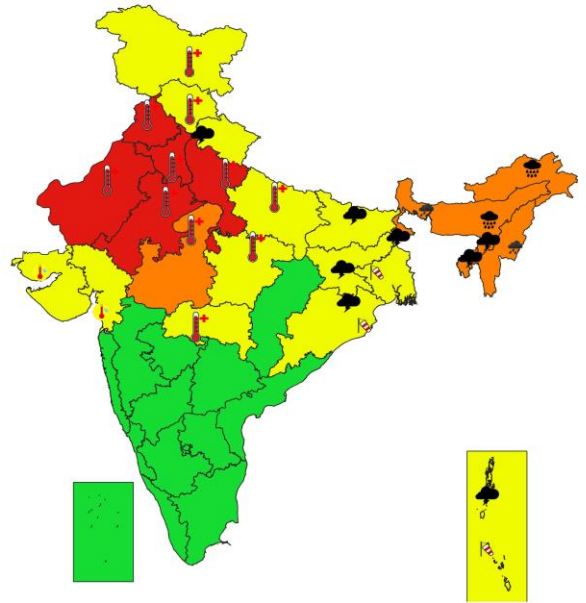


Subdivision Warning

- | | | | |
|----------------------|------------|----------------------|---------------------------|
| Fog | Heavy Snow | Cold Day | Subdivision Colour |
| Heavy Rain | Hailstorm | Ground Frost | NO WARNING |
| Very Heavy Rain | Dust Storm | Strong Surface Winds | WATCH(BE UPDATED) |
| Extremely Heavy Rain | Heat Wave | Thunder & Lightning | ALERT (BE PREPARED) |
| | Cold Wave | Hot and Humid | WARNING (TAKE ACTION) |



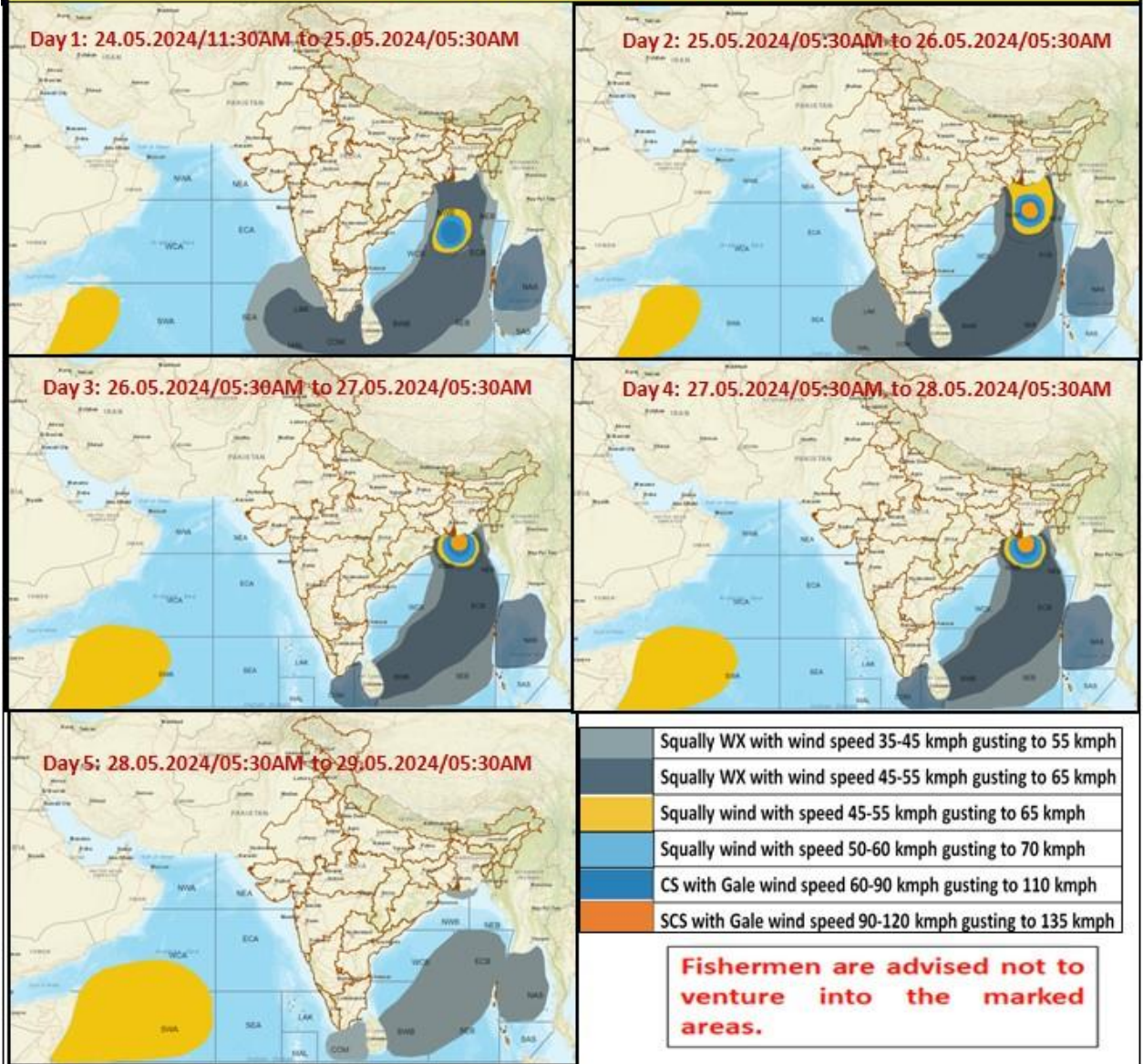
SUBDIVISIONWISE WEATHER WARNING FOR DAY 5
28-05-2024

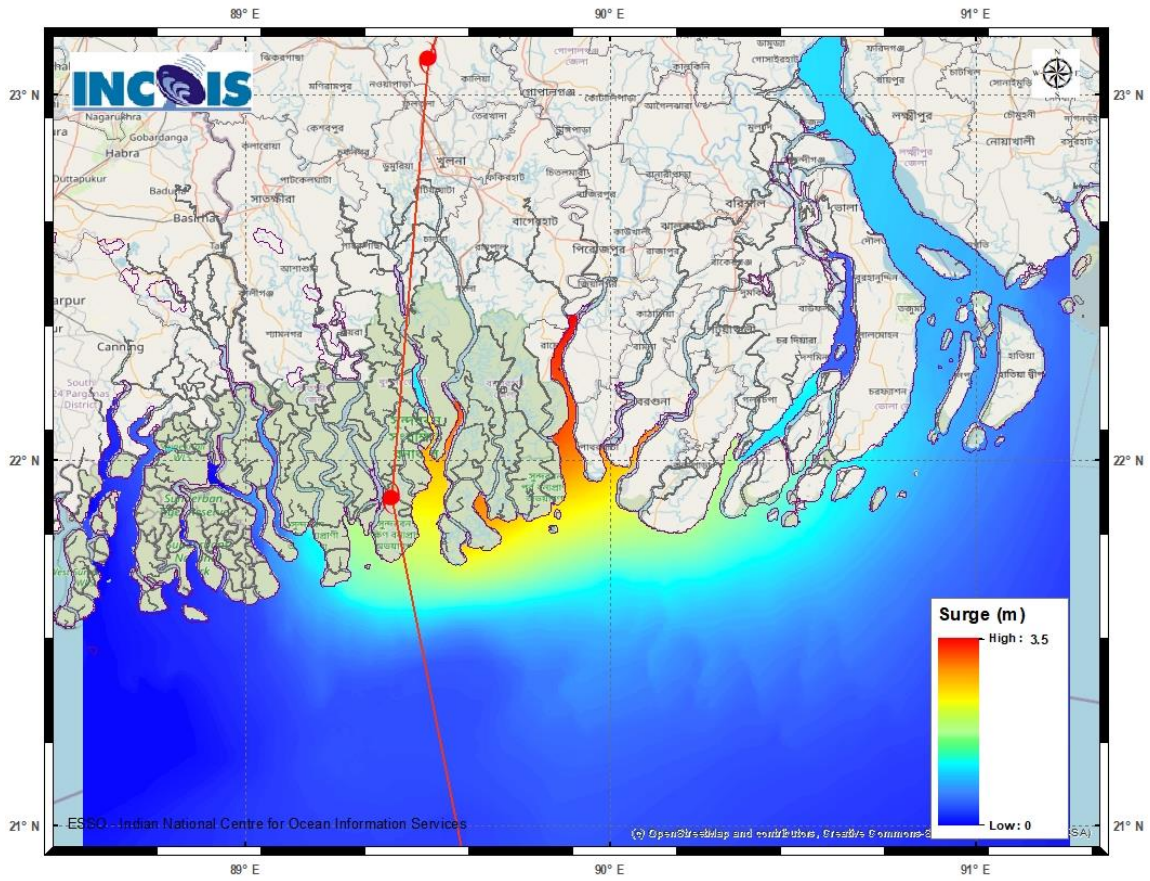


Subdivision Warning

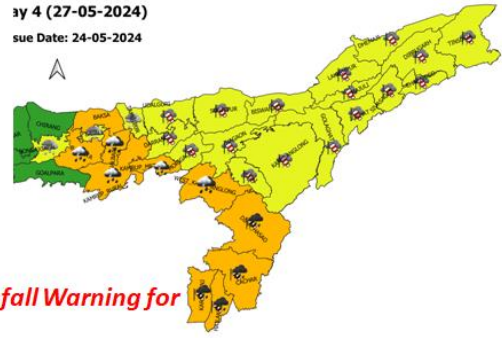
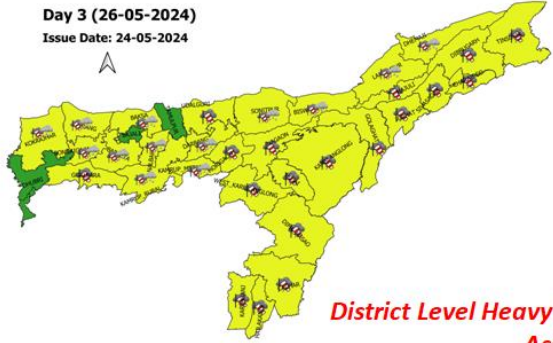
- | | | | |
|----------------------|------------|----------------------|---------------------------|
| Fog | Heavy Snow | Cold Day | Subdivision Colour |
| Heavy Rain | Hailstorm | Ground Frost | NO WARNING |
| Very Heavy Rain | Dust Storm | Strong Surface Winds | WATCH(BE UPDATED) |
| Extremely Heavy Rain | Heat Wave | Thunder & Lightning | ALERT (BE PREPARED) |
| | Cold Wave | Hot and Humid | WARNING (TAKE ACTION) |

Fishermen Warning Graphics

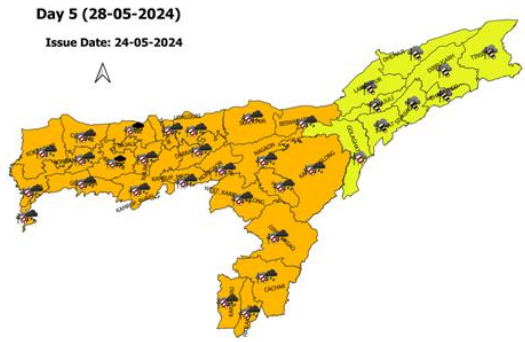




Storm Surge Warning Graphic

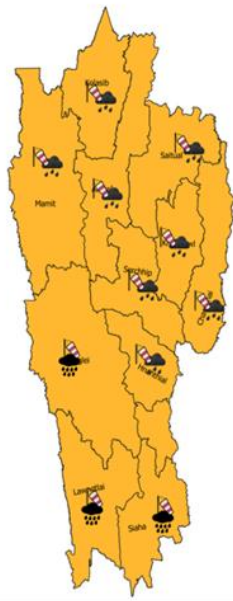


District Level Heavy Rainfall Warning for Assam



District Level Heavy Rainfall Warning for Mizoram

Issue Date:
24-05-2024
Day 4 (27-05-2024)



Issue Date:
24-05-2024
Day 5

